

ProGlass Item # T6030



SMITH-EMERY LABORATORIES

An Independent Commercial Testing Laboratory

781 E. Washington Boulevard - 2nd Floor Los Angeles, California 90021 ♦ (213) 745-5333 ♦ Fax (213) 749-7232

Project No.: 39617-1
Lab No. L-11-0157

February 8, 2011

CLIENT: *Attn: Jim Holland*
PROGLASS, INC.
P.O. BOX 581
WAUNA, WA 98395

SUBJECT: **Fiberglass Trench Cover - Load Test**
SOURCE: Submitted to Smith-Emery Laboratories by Client on February 3, 2011
TEST METHOD: General Engineering Procedure as per Client
DATE OF TEST: February 8, 2011

Report of Tests

MATERIAL DESCRIPTION: **PROGLASS COVER T - 6030 (60" x 29.75")**

PROCEDURE:

The trench cover was placed in calibrated 0-100,000 pounds DK No. 1 Universal testing machine and a concentrated load was applied at the center of the sample; using a 1/4-inch thick reinforced rubber pad (shore hardness "A" 80) on which a 1-inch thick 6-inch by 6-inch square steel plate was placed. Supports (per clients sketch/instructions) were 1-inch bars on total length each side.

The load was applied to the assembly and deflection was monitored until failure occurred

Results are as follows:

<i>Test Number</i>	<i>Trench Cover I.D.</i>	<i>Trench Cover Size</i>	<i>Maximum Load (Lbs.)</i>	<i>Deflection Max. Load (inches)</i>
1	T - 6030	60" x 29.75"	14,703	Projected 3.2 inch

Observations: Sample cracked at one of the Length side

Respectfully Submitted,

SMITH-EMERY LABORATORIES

Pingsheng Zhu
Pingsheng Zhu
Registered Civil Engineer No.: C 72482
Registration Expires : 6-30-12

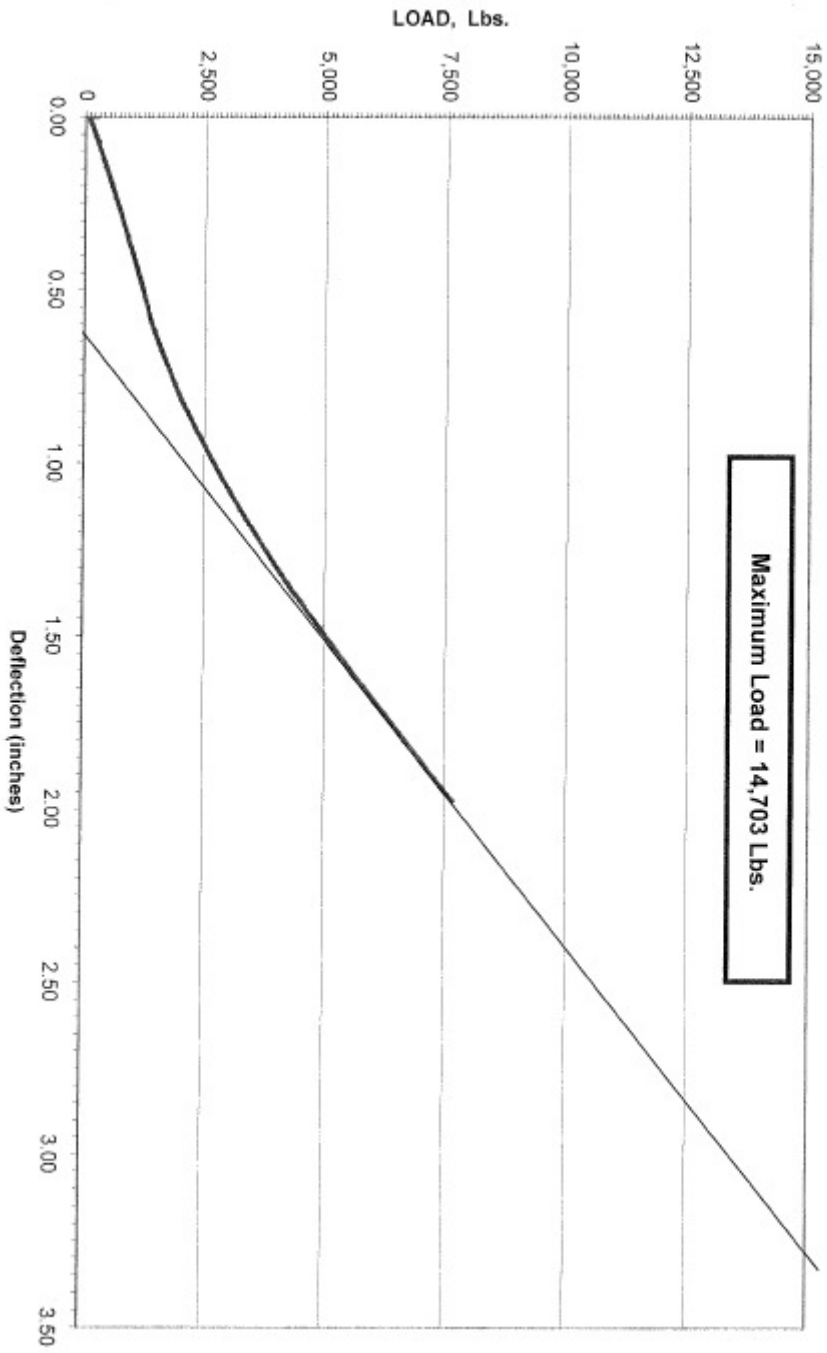


- Materials Tested Comply With Specifications.
- Materials Tested Did Not Comply With Specifications.
- No Established Criteria for Acceptable Limits.
- For Information Only

rc

CC: PROGLASS, INC ; SMITH-EMERY LABORATORIES

ProGlass Item # T6030



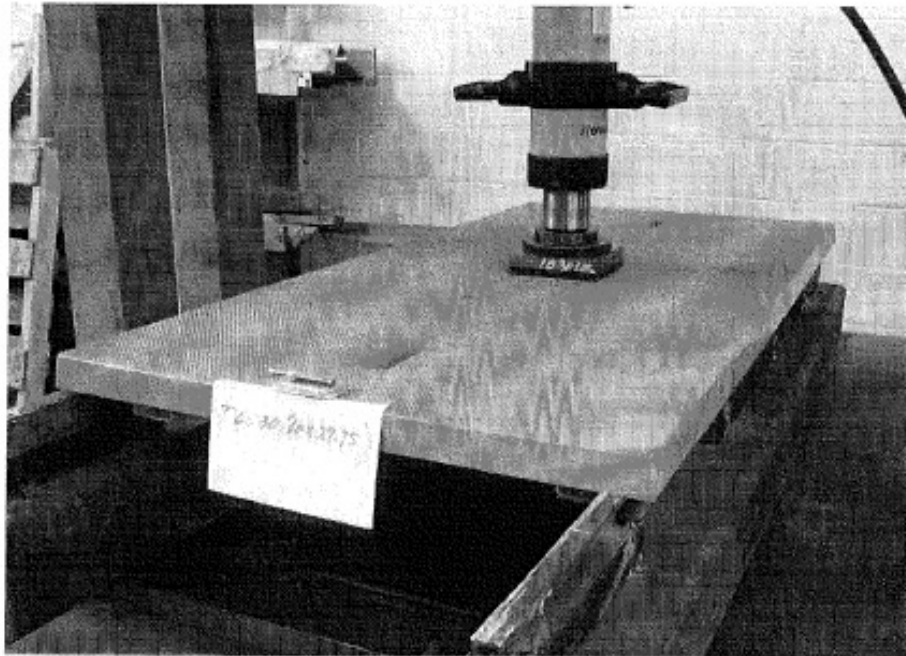
ProGlass T 6030 (02-08-11)

ProGlass Item # T6030

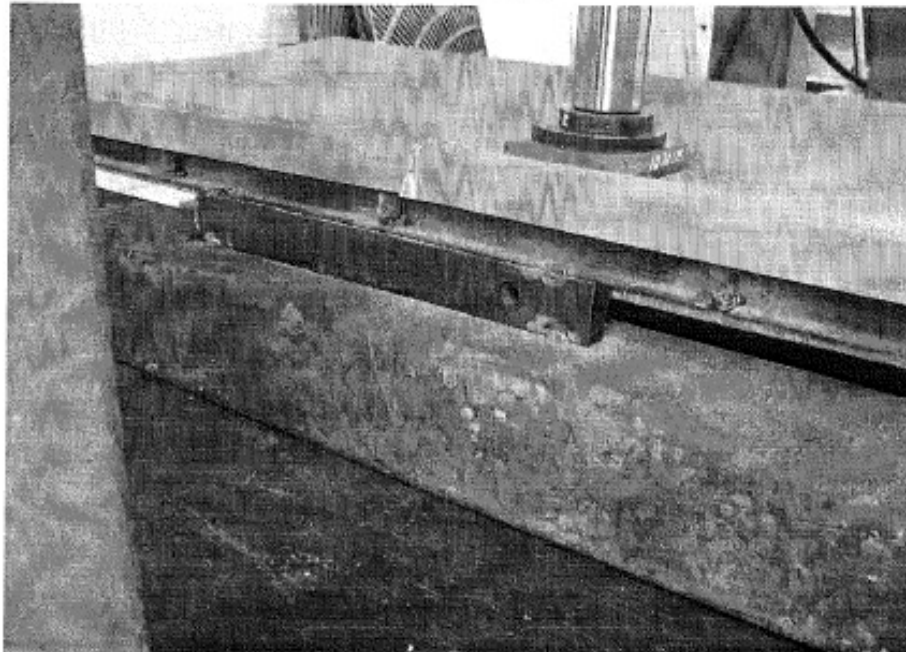
Project No.: 39617-1
Lab No. L-11-0157

February 8, 2011

TEST SET-UP ♦ T-6030



TYPICAL FAILURE



CC: PROGLASS, INC ; SMITH-EMERY LABORATORIES

P:\PHYLAB\2011\39617 PROGLASS INC\Job L-11-0157 Trench Covers

Page 3 of 4